

ALBUQUERQUE AREA INDIAN HEALTH BOARD, INC.

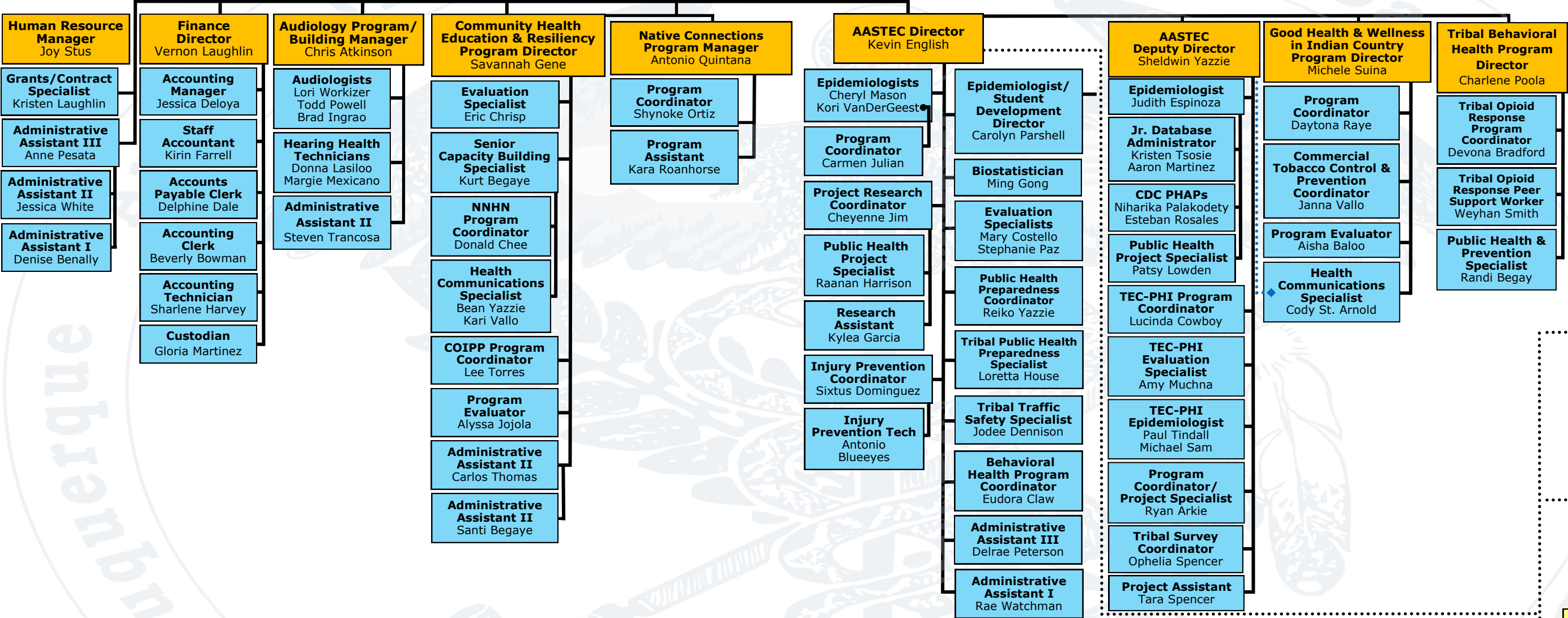
Board of Directors

JICARILLA APACHE NATION-Donnie Garcia
MESCALERO APACHE TRIBE-Euphrasia Platte
RAMAH NAVAJO BAND- Beverly Coho

SOUTHERN UTE INDIAN TRIBE-Marjorie Barry
TÓHAJILEE BAND OF NAVAJO-Jaqueline Platero
UTE MOUNTAIN UTE TRIBE- Conrad Jacket

Executive Director

Ayn N. Whyte



AASTECC Technical Advisory Committee


- UNM
- NMDOH
- CODOH
- NM Tumor Registry
- El Paso County Health
- First Nations Community Health Source
- Navajo Nation TEC


Southwest Tribal Institutional Review Board

- Marvin Sarracino, Chair
- William Freeman
- Dr. Donald Clark
- Dr. Roberta Paul
- Rainey Enjady
- Roberto Armijo
- Cheryl Fairbank
- Dr. Emily Haozous
- Merilee Garcia

Executive Council
NARCH Community & Scientific Advisory Council

- 27 Albuquerque Area Tribes, Bands, Pueblos and Nations
- Zuni/Ramah Service Unit
- Southern Colorado Ute Service Unit
- Ysleta del Sur Service Unit
- Acoma-Canoncito-Laguna Service Unit
- Santa Fe Service Unit
- Taos/Picuris Service Unit
- Jicarilla Service Unit
- Albuquerque Service Unit
- Mescalero Service Unit
- Albuquerque Area Indian Health Board
- All Pueblo Council of Governors

Chairman: 

Secretary: 

Date: 03.08.2024