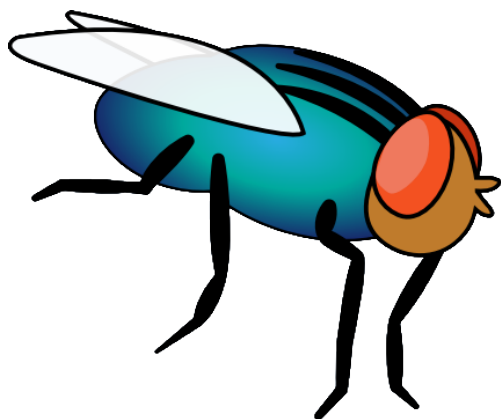


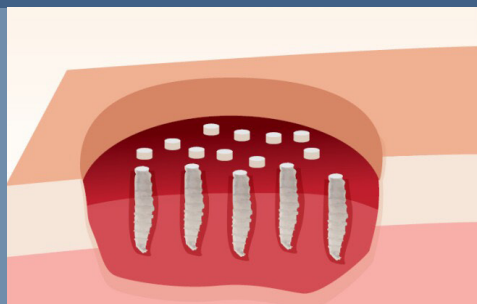
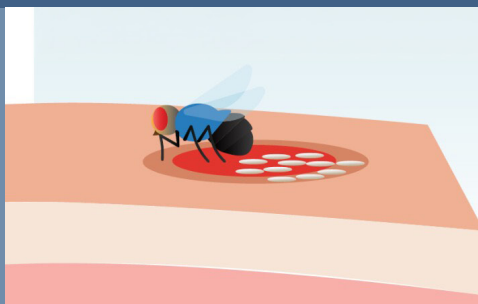
NEW WORLD SCREWWORM (NWS)

What Tribal Communities Need to Know



- The New World Screwworm is a **fly that lays eggs in wounds and body openings of living warm-blooded animals**, including livestock (cattle, horses, sheep, goats, pigs), pets, wildlife, and humans.
- The New World Screwworm **larvae (maggots) dig into flesh and feed on living tissue**, which causes severe harm, intense pain, and often death if left untreated.
- New World Screwworm has been spreading across Central America and **has now reached the U.S.**

How Does New World Screwworm Spread and Cause Harm?



1. The New World Screwworm fly lays eggs on the edges of wounds or body openings such as the nose, mouth, eyes, ears
2. The eggs hatch into larvae, commonly called maggots, within 12-24 hours
3. The larvae/maggots dig into wounds, feeding like a screw into wood
4. The larvae/maggots feed on living flesh for 3-7 days, causing extensive damage

Other New World Screwworm (NWS) Facts

- Wounds as small as a bug bite may attract a NWS fly to lay eggs.
- After feeding for 7 days, larvae/maggots drop to the ground, burrow into the soil, and emerge as adult screwworm flies.
- Treating NWS should involve a veterinarian or doctor and includes physical removal of larvae/maggots, intensive wound care, and antiparasitic medications.

IMPORTANT!

Only flies can spread NWS.

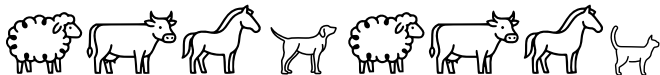
It cannot spread from animal to animal or person to person.



You can learn more about the status of the New World Screwworm outbreak [here](#)



What can be done to protect ourselves, our families, and our communities?



Livestock & Pet Protection

Inspect animals regularly for:

- Open wounds that worsen or do not heal
- Visible larvae or maggots
- Swelling, discharge, or foul odor around body openings such as nose, ears, genitals, or navel of newborns
- Animals licking or biting at a wound
- Restlessness, isolation, or unusual behavior

Protect & treat wounds immediately with an approved dressing or insecticide.

Attention hunters! Do not transport, eat, or field-dress suspected animals. Leave it in place to prevent the spread of maggots. Instead, take photos, document the location, and report immediately.

If you suspect New World Screwworm in an animal, contact:

For pets or livestock, call your veterinarian and contact the Texas Animal Health Commission (TAHC) at 1-800-550-8242 or through your local TAHC regional office.

If you see a live wild animal with larvae, immediately contact Texas Parks and Wildlife (TPWD) through your local wildlife biologist at 1-512-389-4505.



Human Prevention Measures

Human infestations with NWS are rare, but possible.

Dress all wounds: Wash and cover all cuts, bites, scratches, rashes, or broken skin.

Apply insect repellent: Use an EPA-registered insect repellent (bug spray) whenever you spend time outdoors.

Wear protective clothing: Protect your skin by wearing long sleeves, long pants, socks, and hats.

Secure your sleeping area: Sleep inside with window screens both day and night or use a bed net or tent with screens.

If you suspect you or another person has an NWS infestation:

Contact your healthcare provider immediately. Your provider should contact Texas Department of State Health Services Region 9/10, Susan Schaff (915)-834-7782

24/7 Disease Reporting Phone: 1-888-847-6892

URGENT!

Do not throw any live maggots/larvae in the trash or outside as this could result in NWS spreading in your area.



For more information about New World Screwworm visit: Screwworm.gov or screwwormNM.org